



Grizzly Bears: Potential changes to recovery approach outside of recovery zones

Terrestrial Regional Consultation Team Meeting
November 2, 2021

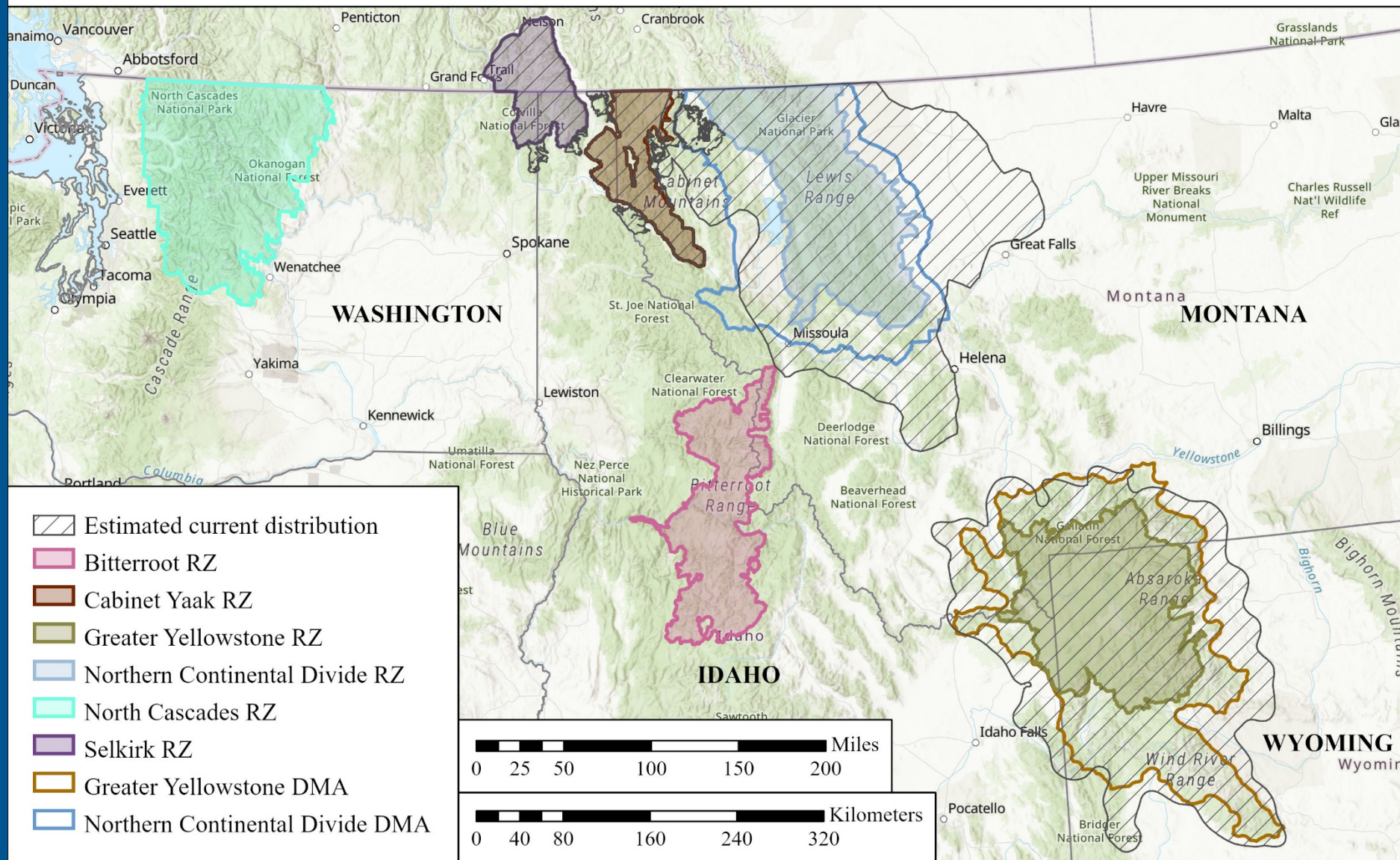
Jennifer Fortin-Noreus



Topics

- Management outside recovery zones
 - NCDE Conservation Strategy
 - History and Context
 - Habitat Standards
 - Issues for Discussion
 - The Bitterroot Ecosystems
- ‘May be present’ methodology for grizzly bears
- Relocation sites

Grizzly Bear Recovery Zones and Estimated Distributions



Estimated distributions are current as of 2020 for the Greater Yellowstone and the Northern Continental Divide and are current as of 2019 for the Cabinet-Yaak and Selkirk. There are currently no known populations in the North Cascades and Bitterroot. Current distributions do not include low-density peripheral locations and represent a minimum known area of occupancy, not extent of occurrence.

DMA = Demographic Monitoring Area; RZ = Recovery Zone

3-1,276)





U.S. Fish & Wildlife Service

NCDE Conservation Strategy

- Purpose: post-delisting management plan that summarizes commitments, plans and regulations
- Draft CS developed 2013
- Public comment completed
- Technical team reconvened in 2017 to address comments and update information
- Approved by NCDE Subcommittee 2018 (not signed by all)

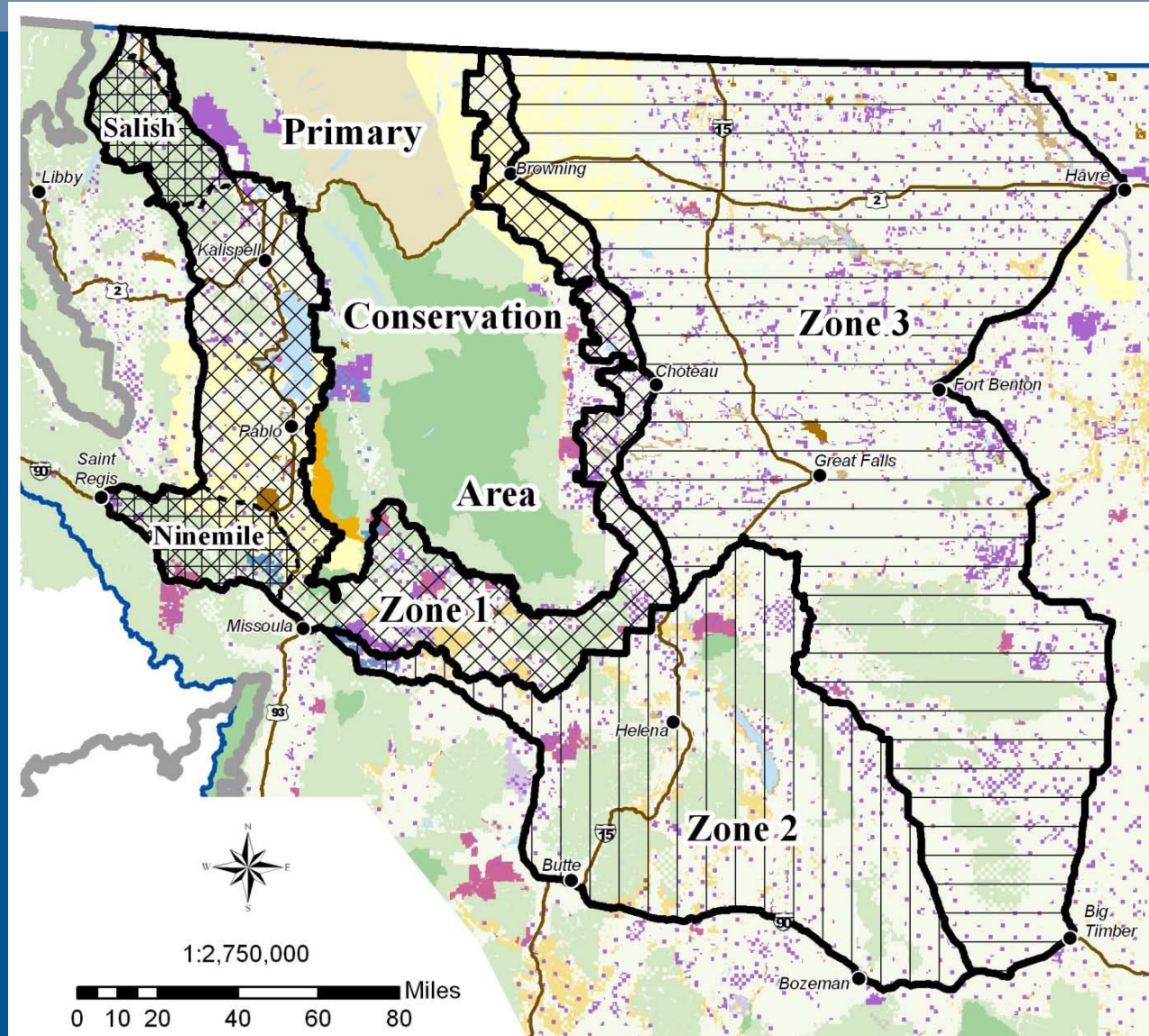




U.S. Fish & Wildlife Service

NCDE Conservation Strategy

- Population managed using a Primary Conservation Area (PCA) and 3 additional management zone
- PCA: maintain habitat conditions (Recovery Zone)
- Habitat protections vary by management objectives in these zones





U.S. Fish & Wildlife Service

Habitat Objectives

- PCA/Recovery Zone: maintain at or improve upon baseline levels (with exceptions):
 - Secure core, OMRD, TMRD
 - Overnight developed recreation sites
 - Livestock allotments
- On USFS lands in Zone 1:
 - no net increase in linear miles or density of roads open for public motorized use during the non-denning season
 - Sheep allotments
- On USFS lands in DCAs:
 - Forest specific protections focused on limiting linear miles of open road and maintaining IRAs



U.S. Fish & Wildlife Service

CS Habitat Objectives for Consideration

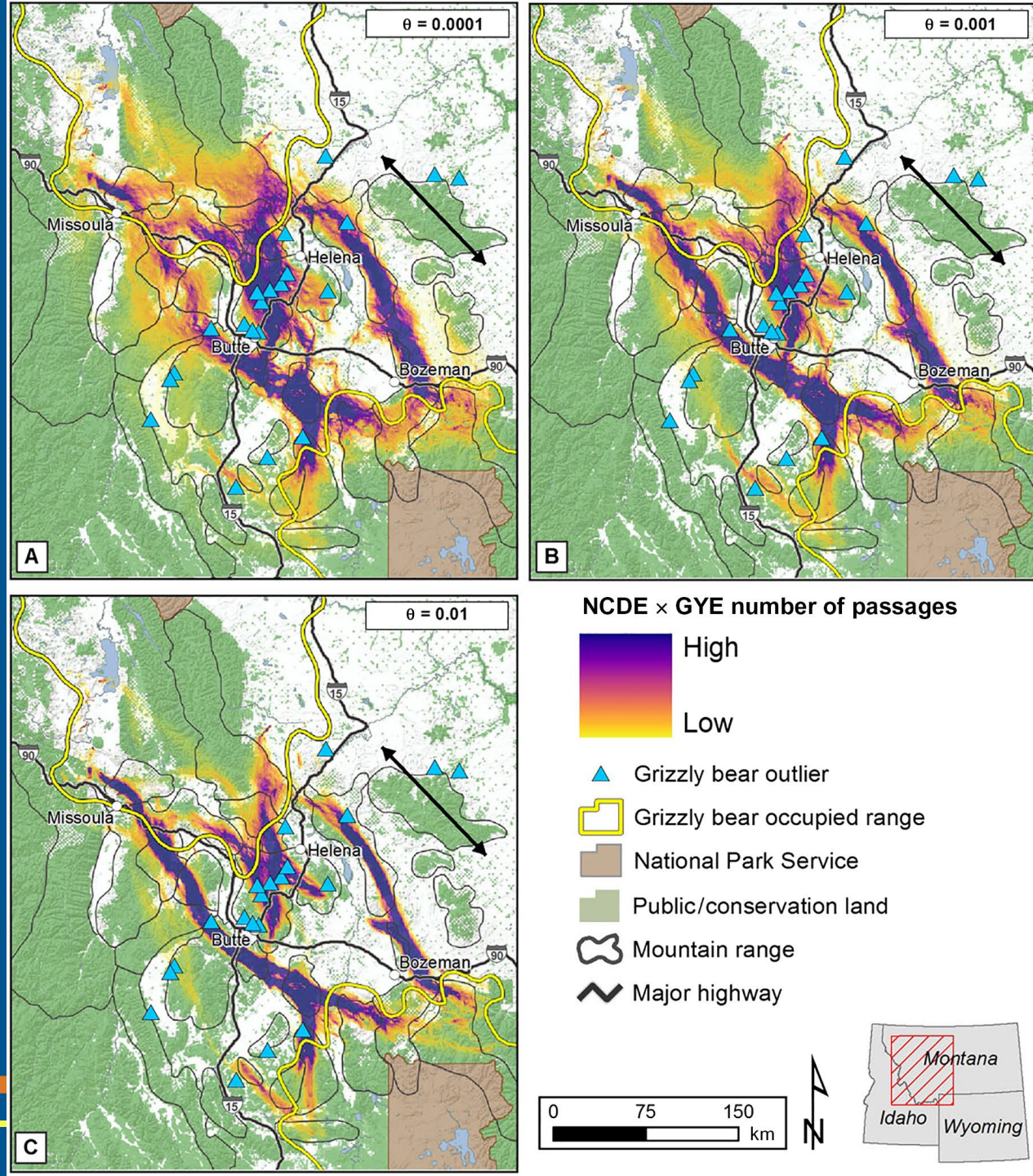
- Objective: to improve management for connectivity
- DCAs: demographic connectivity -> linear road miles does not maintain secure core
- Zone 2: genetic connectivity -> currently no habitat objectives



Other needs

- Objectives:
 - improve management for connectivity between occupied ecosystems
 - facilitate natural recolonization of the Bitterroot
- Currently gathering data to inform future discussions
 - MFWP post-doc evaluating NCDE expansion
 - What do males need?
 - Bitterroot habitat quality mapping (not yet funded)

Connectivity: Peck et al. 2017





“May be present” map for grizzly bears

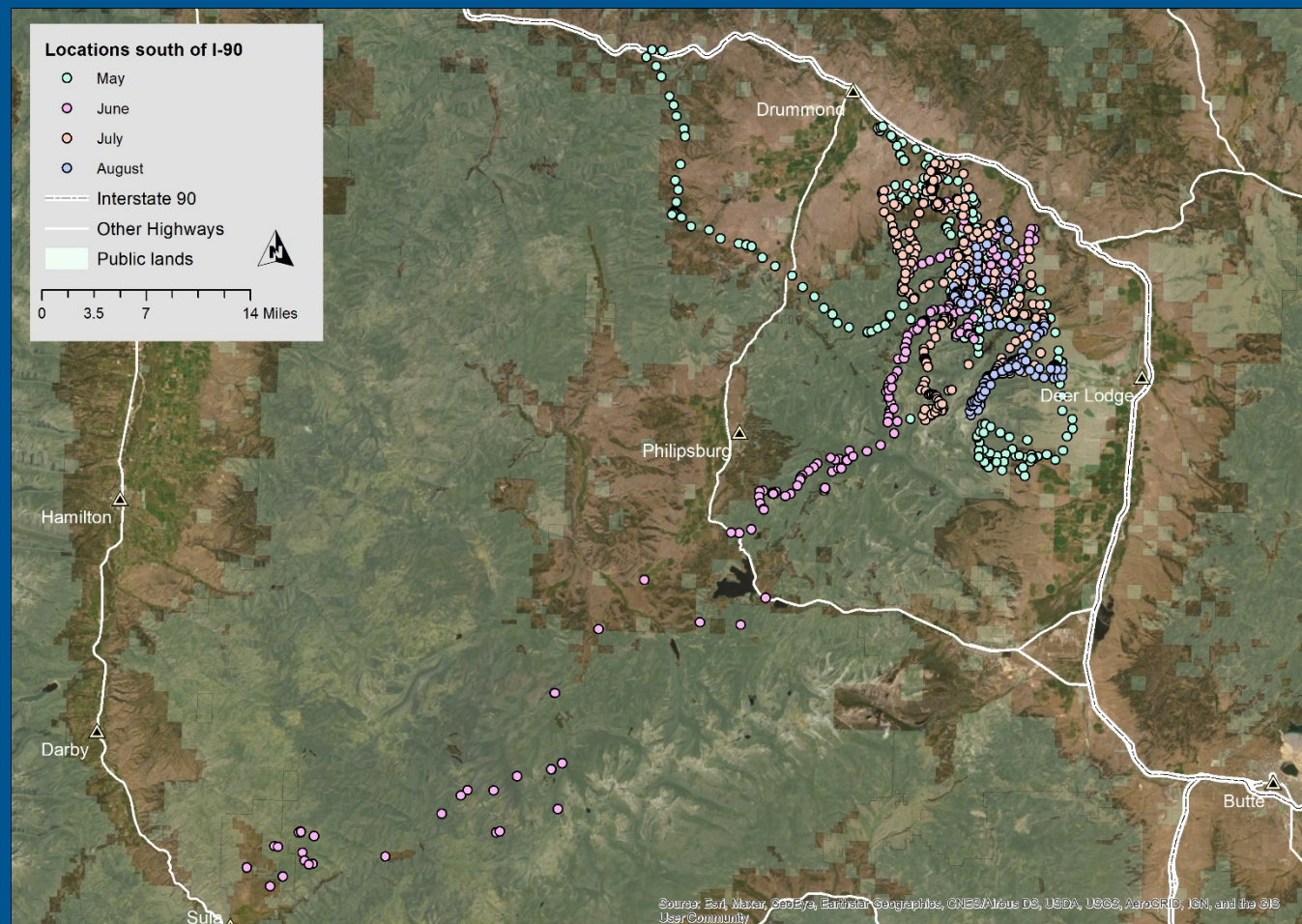


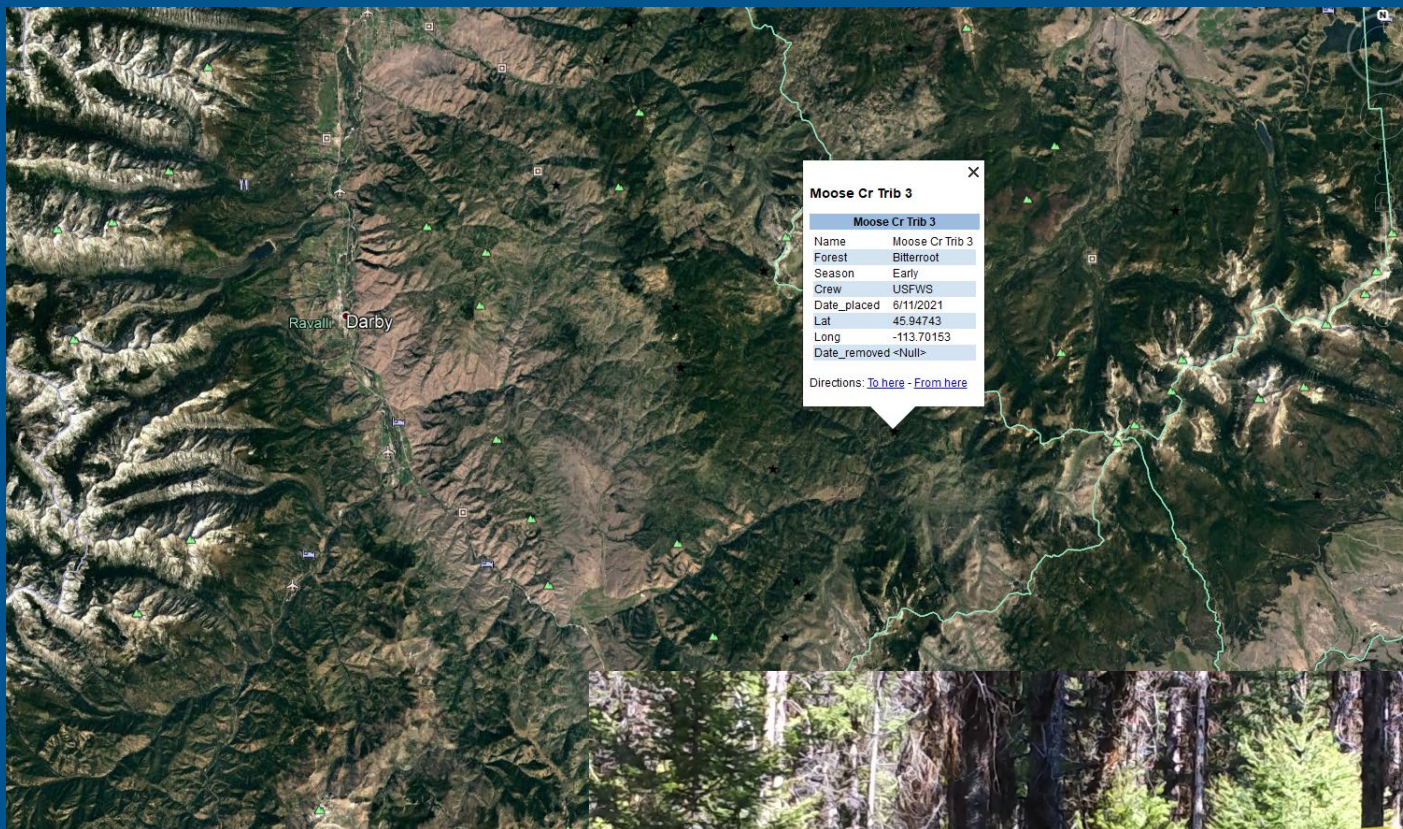


U.S. Fish & Wildlife Service

“May be present” map for grizzly bears

- Partner letter for Level 1 Streamlining Teams
- Updated annually
- New table
 - Sex
 - Data type
 - Number
 - Year





- SW MT DNA Project 2021 hair coral



71°F21°C

06-14-2021 10:27:50



ALTH CAM®

07:18

08/25/21

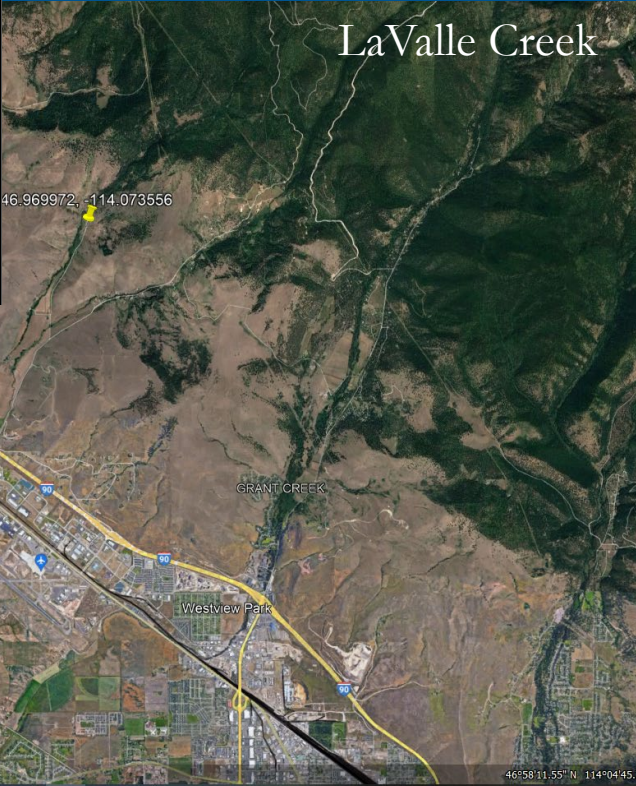
29 °F



STEALTH CAM



08:37AM 05/09/2019 0204





U.S. Fish & Wildlife Service

Relocation Sites

- Montana SB337: MFWP employees may only:
 - Relocate bears to sites previously approved by the commission
 - Relocate bears in conflict inside the recovery zone
- Drafting USFWS/MFWP MOU
- Build off what you worked on with Jamie Jonkel
- Tier of situations
- Stay tuned for future meetings!



U.S. Fish & Wildlife Service

Questions?

